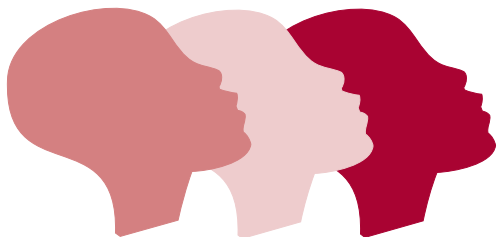


ANNUAL REPORT

2005



Expanding Outreach, Developing Community Leaders



Self-Management Workshops

NAAWLI launched its one-day Self Management: A Strategic Tool for Effective Leadership workshops in 2005 with two successful ventures in Jacksonville, Florida (April 15), and Bloomington, Illinois (August 11). At each workshop the keynote speaker got the session off to an enthusiastic start. Participants then selected concurrent sessions to attend, choosing from those focused on skills building and leadership development.

A diverse group of women from corporations as well as the public and nonprofit sectors attended the

continued on page 4



Former City of Bloomington mayor, Judy Markowitz (left), and Rhonda Smith, systems manager, State Farm

Message from the Chair, Barbara Tolliver-Haskins

NAAWLI's impact continued to move in alignment with its mission of creating extraordinary learning opportunities for women nationally. This year, as a result of a two-year grant from the Kellogg Foundation, NAAWLI presented two one-day Self-Management: Strategic Tools for Effective Leadership workshops.



We launched the workshops in Jacksonville, Florida. The second was held in Bloomington, Illinois. Blue Cross-Blue Shield in Florida, Hattie Hill Enterprises, and State Farm Insurance Companies local sales offices provided partnership grants.

Women attending the workshops represented CSX, Florida Community College of Jacksonville, the Jacksonville Airport Authority, State Farm, and United Way of North Florida.

I am so proud to recognize the contributions of our Board members and fellows who served as facilitators, public relations representatives and local committee members. The synergy of the talents offered by the NAAWLI team not only made a difference in the states where the workshops were held, the synergy also energized each of us to seek opportunities to present ourselves to corporations, non-profits and learning institutions across America.

We have a good story to tell of fulfilling a dream that emerged well over 10 years ago. We have not been without our challenges as we seek financial support and contributions to meet our fundraising goals.

The Board continues to build partnerships and alliances in an effort to expand our fellows program. Each year, we survey our alumnae to gain insights into their experiences. Fellows from the Class of 2005 stated the following:

I got a different perspective on the problems in my community compared to other cities. I gained a greater appreciation for what it takes to be an authentic leader. I also acquired additional skills on how to plan my work and solve problems.

We were able to meet influential people who were making a difference in their communities. This inspired me to take a look at the community activities I had previously participated in and do some reevaluating of my role and purpose.

Our goal is to raise the bar of excellence as we offer the fellows experience to women who have already demonstrated exceptional leadership potential. Special thanks to each of our sponsors as we seek to enrich African-American communities and reinforce women's leadership roles across America.



Community Service Projects

YVONNE M. CARLTON

In collaboration with The Training Source, a non-profit agency in Prince George's County, Maryland, **Light in the Window** will provide training, information and support related to purchasing and maintaining ownership of a home. Topics include money management, credit repair, shopping for a mortgage, and home repair and maintenance.

NAAWLI Class of 2005

Yvonne M. Carlton
Program Manager
Prince George's County
Government
Upper Marlboro, Maryland

Velina J. Dixon
Section Manager
State Farm Mutual Automobile
Insurance Companies
Plantation, Florida

Tracey D. Howard Holmes
Class Historian
Director, NFL Partnership Group
United Way of America
Alexandria, Virginia

Stephanie L. White
Director, Utility Coal
CSX Transportation, Inc.
Jacksonville, Florida

Stephanie E. Woodard
Class Scribe
Professional Development
Manager
State Farm Insurance Companies
Bloomington, Illinois

VELINA J. DIXON

Rebecca's Helping Hands is a volunteer organization dedicated to supporting the transition program for incarcerated women at the Broward Correctional Institution in Broward County, Florida. Support will include re-entry training related to job search skills, job placement and connection with other service organizations. The Foundation will also collect clothing for women to wear during interviews.

TRACEY D. HOWARD HOLMES

Located in Springfield, Virginia, **Jumpin' Jills** is designed to reverse childhood obesity by promoting fitness, nutrition, and wellness among adolescent girls. The project will serve 12 girls, ages 10-13, who are overweight, or at risk of becoming overweight. The program monitors participants for a year after the 12-week program ends. Program elements include exercise through a walking club, education sessions, weekly nutrition and fitness monitoring and support, and field trips as rewards.

STEPHANIE L. WHITE

In partnership with the Jacksonville Children's Commission, **Financial Literacy** will provide enrichment programs after school. The curricula will instruct middle school students in Duval County, Florida, on the importance of personal finance and teach basic financial skills.

STEPHANIE E. WOODARD

The **College Preparatory Series** will identify 30 at-risk students in grades 6-12 who need educational and financial assistance to attend colleges in the Bloomington/Normal, Illinois, area. Students and their parents will learn about the college admission process, academic expectations, scholarship availability, and basic skills needed to be successful in college.



Self-Management Workshops

continued from page 1

workshop. In evaluating the Jacksonville workshop, one participant said: "I would like to thank you for allowing me to experience such a dynamic conference. I enjoyed the wonderful speakers and intriguing sessions, as well as networking with other empowering women."

NAAWLI is well represented in both Jacksonville and Bloomington by Board members and NAAWLI alumnae and fellows. In Jacksonville, alumna Sandra Hull-Richardson '03 and fellow Stephanie White '05 were on hand to lend support. NAAWLI Board members are prominent in the Jacksonville community. The Board chair, Barbara Tolliver-Haskins had recently returned to her hometown from Lincoln, Nebraska, after retiring from State Farm. Barbara Darby, NAAWLI's first vice president, is president of Florida Community College of Jacksonville. Kathy Wilson is the associate vice president of Load Engineering and Design Services at CSX.

Bloomington alumnae formed a hard-working local committee that recruited 94 women. Leading the local effort was Celeste Allen '02. She was ably assisted by alumnae Cheryl Jackson '01 and Eunice Patton '00. The former two-term mayor of Bloomington, Judy Markowitz, delivered the keynote address, riveting the audience with the story of her personal leadership journey.

BOARD OF DIRECTORS

Zulma X. Barrios, L.H.D.
Co-founder
Senior Advisor
The Gallup Organization
Omaha, Nebraska

Juliet A. Beezley
Principal
Training & Development Resources
LaMesa, California

Barbara Barnaby Darby, Ed.D.
Second Vice Chair
Campus President, North Campus
Florida Community College at
Jacksonville
Jacksonville, Florida

Deborah W. Foster
Executive Vice President
Strategic Alliances and Inclusion
Office of the President
United Way of America
Alexandria, Virginia

G. Arlivia Gamble
Vice President Agency, Agency/Sales Resources
State Farm Insurance Companies
Irving, Texas

Hattie Hill
Chief Executive Officer
Hattie Hill Enterprises
Dallas, Texas

M. Colleen Jones, D.B.A.
First Vice Chair
Assistant to the Chancellor for
Organizational Development
Assistant Professor of Management
The University of Nebraska-Lincoln
Lincoln, Nebraska

Jannie Lathan
President & CEO
Lathan Engineering, Inc.
Austin, Texas

Lethia C. Owens
Alumnae Representative
President/CEO
Lethia Owens International, Inc.
St. Louis, Missouri

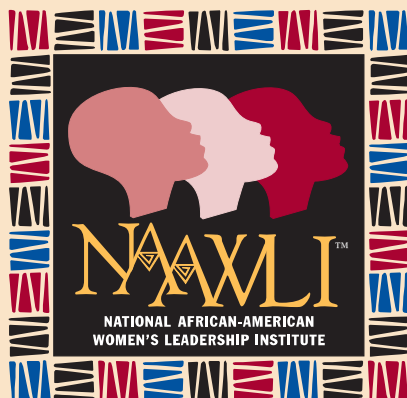
Delores A. Parker, Ph.D.
Secretary
Vice-President for Academic
and Student Services
The North Carolina Community
College System
Raleigh, North Carolina

Gloria R. Scott, Ph.D.
Co-founder
Former President
Bennett College
Riviera, Texas

DeLores (Dee) S. Todd
Treasurer
Athletic Director
North Carolina A&T
State University
Greensboro, North Carolina

Barbara Tolliver-Haskins,
CPCU, CLU Chair
Principal
Executive Coaching Solutions
Jacksonville, Florida

Katherine E. Wilson, Esq.
Associate Vice President, Load
Engineering & Design Services
CSX Transportation
Jacksonville, Florida



FACT FILE

- 47 NAAWLI alumnae reside in 16 states
- Community service projects have impacted over 2,300 individuals
- Major funding partners:
 - State Farm Insurance Companies
 - W. K. Kellogg Foundation
 - Dell Inc.